



PL2302 Prolific v1.2.10

The prolific adapter interfaces one (1) RS232 to one (1) USB. For use with the MoundTech Mass Spec, two (2) Prolific adapters are required.

Installation:



1) From the CD, copy **SW-1301_v1.2.1.zip** to your computer's desktop

2) Unzip (extract) the files

3) Open the newly created desktop folder **SW-1301_v1.2.1**



4) Run **PL2303_Prolific_DriverInstaller_v1210.exe**

5) The computer will assign each cable as it is connected to each USB port



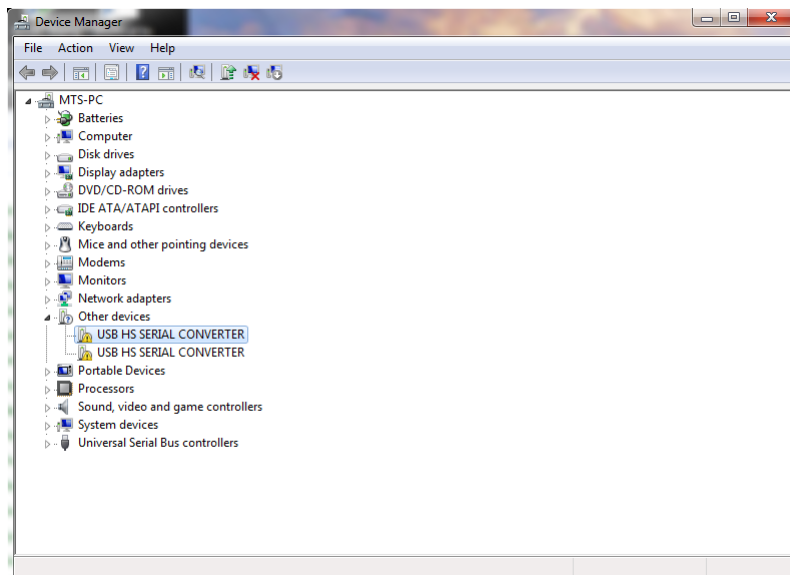
CDM20808 FTDIBUS

The FTDIBUS adapter interfaces two (2) RS232 to one (1) USB. For use with the MoundTech Mass Spec, one (1) FTDIBUS adapter is required.

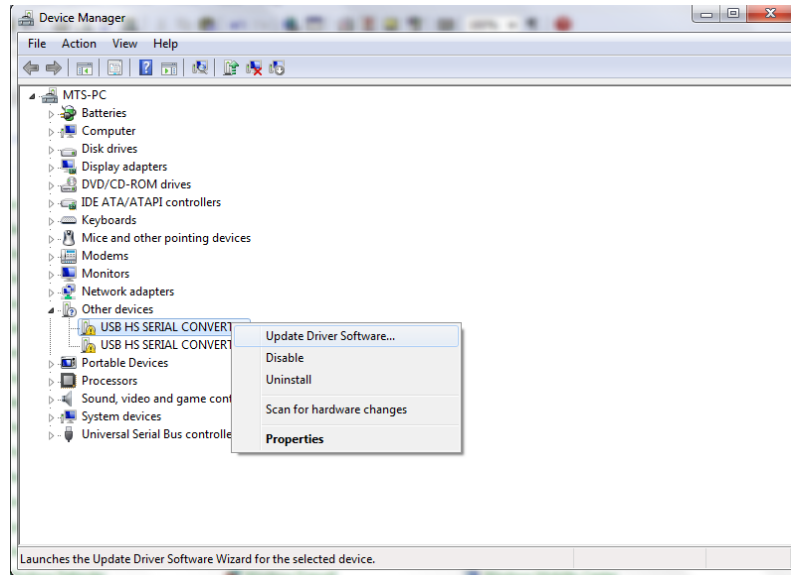
Installation:



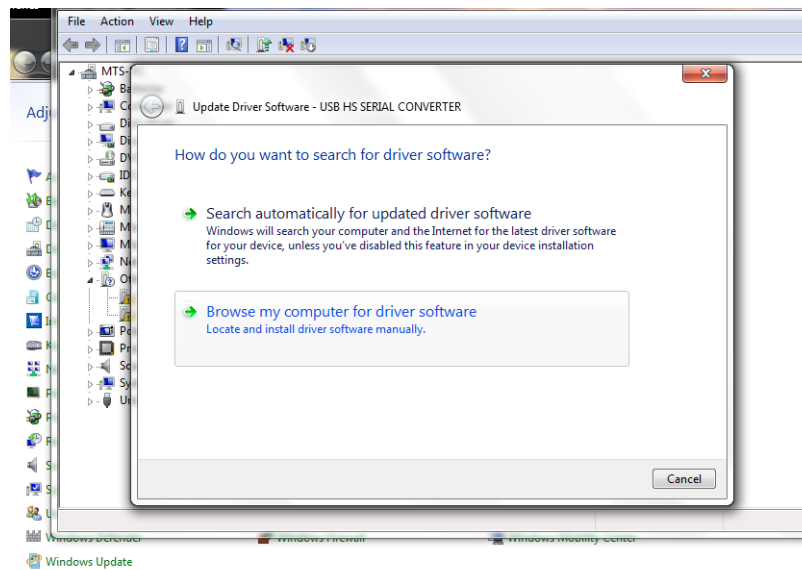
- 1) From the CD, copy **Cdm20808.zip** to your computer's desktop
- 2) Unzip (extract) the files
- 3) Open Windows Device Manager
- 4) Plug in FTDIBUS adapter USB to your computer USB port
- 5) Notice that the Device Manager listing is updated:



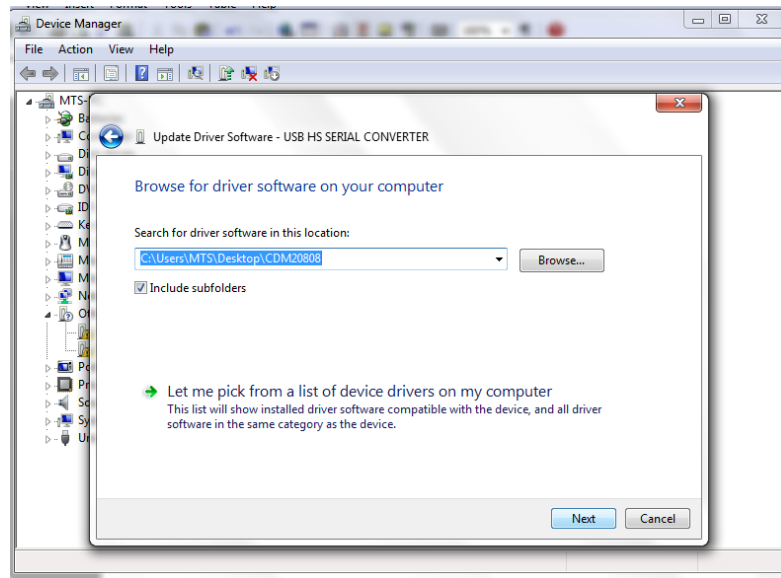
- 7) Right-click on the 1st “USB HS SERIAL CONVERTER” and Select “Update Driver Software...”



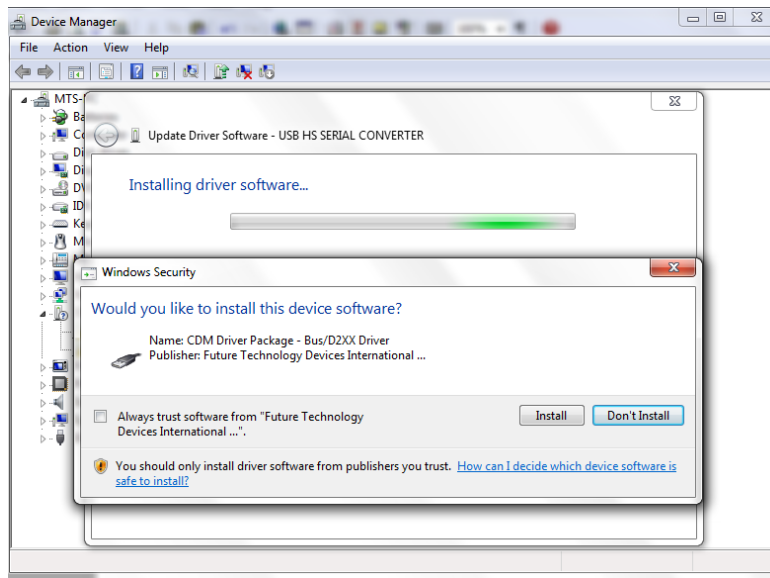
- 8) Select “Browse my computer for driver software” option



- 9) Browse to the unzipped location (desktop folder CDM200808), check include subfolders, and click “Next”



- 10) You will be asked if you want to install the CDM Driver Package published by FTDI, select “Install”



- 11) The computer will now install the Dual RS232 to USB device driver and assign separate ports for each RS232 connection